

OpenWide

Ever wonder what design experts think about the spaces they've created for their clients? Here, an architect and a designer reveal some of their personal favorites — and what it takes to be a great client.

By Pamela Bunn

DESIGNER

Debra Rosenbaum of Rosenbaum Design in Los Angeles knows

a thing or two about collaboration. After working for years as an interior designer for projects including a retail store and a casino, Rosenbaum now has a thriving commercial and residential design firm. Her favorite room is this updated kitchen in a transitional 1930s Westwood home. While Rosenbaum also revamped three bathrooms in the residence, it was in this room that she put her storage expertise to work.

Debra, what was this house like before you transformed it?

It's an old house dating back to 1933. Before the remodel, it had a small butler pantry, a moderate-sized kitchen with a maid's room, bath and laundry room. The architect [Kevan Lynd of Kevan Lynd Architects] opened up the space and put an addition at the back of the house including a master suite above it. We pushed out the kitchen and added a pantry and the built-in eating area, which was part of the original maid's room and bathroom.

When you first met with the client, did she have an idea of how she wanted the space to look?

She wanted to create a two-toned kitchen with stainless steel appliances, cabinetry to the 9-foot ceiling — some with glass fronts and under-cabinet lighting — and crown molding above. Having three boys with many friends, she also wanted to include a built-in banquette.

CONTINUED ON PAGE 20

DEBRA ROSENBAUM
ROSENBAUM DESIGN
LOS ANGELES
PHOTOS: BRIAN THOMAS JONES



my favorite room

DEBRA ROSENBAUM FROM PAGE 15

Did you choose these specific colors for your client?

After we designed the space, we created the color palette for the kitchen. We designed the cabinets in a painted beige finish with an antique wash, and a walnut-stained island, breakfast table and buffet to offset the light finish. This aged finish adds more significance and dimension to the newly planned kitchen.

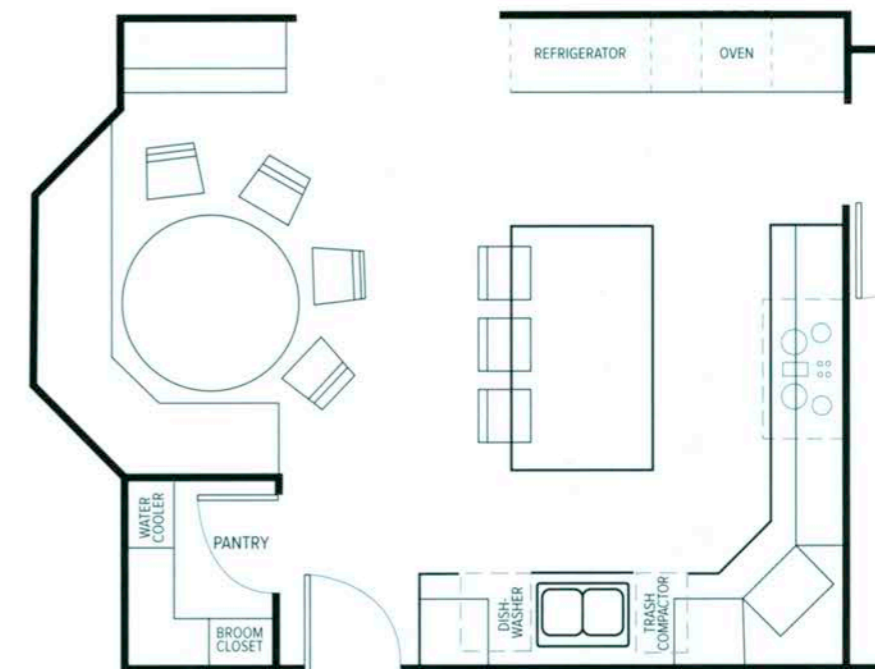
What about some of the other details?

We chose natural stone for the counters and the homeowner selected Juparana granite. She found the chandelier from a vendor who I also work with, and while it's a bit more traditional for the house, it adds drama to the kitchen. We also designed a 6-inch crown molding at the top of the cabinets with the same antique glaze.

At what point are such decisions made?

During the design process, all of the design features were discussed: We talked about the level of detail, the corbel support at the edge of the island overhang and where the

CONTINUED ON PAGE 22



ABOVE It's hard to believe this space was once a butler's pantry and maid's room. Designer Debra Rosenbaum and her client worked hand-in-hand to create this warm, family friendly kitchen. Storage solutions were key to the design. The island is used as additional counter space and houses the couple's wine collection in style.

LEFT The traditional chandeliers and see-through pantry were the client's specific requests, and Rosenbaum was happy to oblige.